



FireArrow KPI Odometer Installation Guide



Notice

This document is a proprietary product of FireArrow and is protected by copyright laws and international treaty. Information in this manual is subject to change without notice and does not represent a commitment on the part of FireArrow. While reasonable efforts have been made to ensure the accuracy of the information contained herein, FireArrow assumes no liability for errors or omissions. No liability is assumed for direct, incidental, or consequential damages resulting from the use of the information contained in this document.

The copyrighted software that accompanies this document is licensed to the End User for use only in strict accordance with the End User License Agreement, which the Licensee should read carefully before commencing use of the software. No part of this publication may be reproduced, transmitted, stored in a retrieval system, nor translated into any human or computer language, in any form or by any means, electronic, mechanical, magnetic, optical, chemical, manual or otherwise, without the prior written permission of the copyright owner. This document may use fictitious names for purposes of demonstration; references to be actual persons, companies, or organizations are strictly coincidental.

Table of Contents

<i>Installation Prerequisites</i>	3
<i>Installation Procedure</i>	3
1. License Manager Installation	3
2. Product Activation Tool Installation	8
3. KPI Odometer Web Part Installation	11
<i>Un-installation</i>	17
<i>License Management</i>	18
<i>License Activation</i>	18
<i>Technical Support</i>	21

Installation Prerequisites

System Requirements :

- Microsoft Windows SharePoint Service 3.0
- Microsoft Office SharePoint Server 2007
- SharePoint 2010 Foundation or SharePoint 2010 Server

Supported Browser:





- Internet Explorer 6, 7, 8
- FireFox 3.0+
- Safari 4.0+
- Chrome

Language Support:

- English

Installation Procedure

The KPI Odometer installation package contains the installation files for the following three components: License Manager Installation, KPI Odometer web part installation and Product Activation Tool Installation.

Name	Date modified	Type
 FireArrow.License1.0.0.0	8/7/2012 1:45 PM	File folder
 KPIOdometer1.0.0.0	8/7/2012 1:46 PM	File folder
 ProductActivation1.0.8	8/7/2012 1:45 PM	File folder
 KPI_Odometer_ManualV1.pdf	8/7/2012 1:52 PM	Adobe Acrobat D...

1. License Manager Installation

The License Manager is only required to install once on a server. If you have already installed it with other FireArrow products before, you can skip the installation steps but need to ensure it is deployed globally. To verify the installation and deployment, follow below steps:

1. Log into the SharePoint Central Administration. Go to the “System Settings” and select “Manage farm Solutions” under the “Farm Management” section.



Farm Management

[Configure alternate access mappings](#) | [Manage farm features](#) |

[Manage farm solutions](#) | [Manage user solutions](#) |

[Configure privacy options](#) | [Configure cross-firewall access zone](#)

[Deploy or retract solution packages across the farm](#)

2. Check if “firearrow.sharepoint.license.wsp” is in the solution list or not. If it is, it means License Manager has been already installed. If not, please skip to the next section to install the License Manager.

firearrow.sharepoint.advancedrssviewer.wsp	Deployed	http://sp2010test.env.firearrowsoft.com/
firearrow.sharepoint.license.wsp	Deployed	Globally deployed.
firearrow.sharepoint.livebanner.wsp	Deployed	http://sp2010test.env.firearrowsoft.com/

Note: During the installation process, the license manager solution is deployed globally

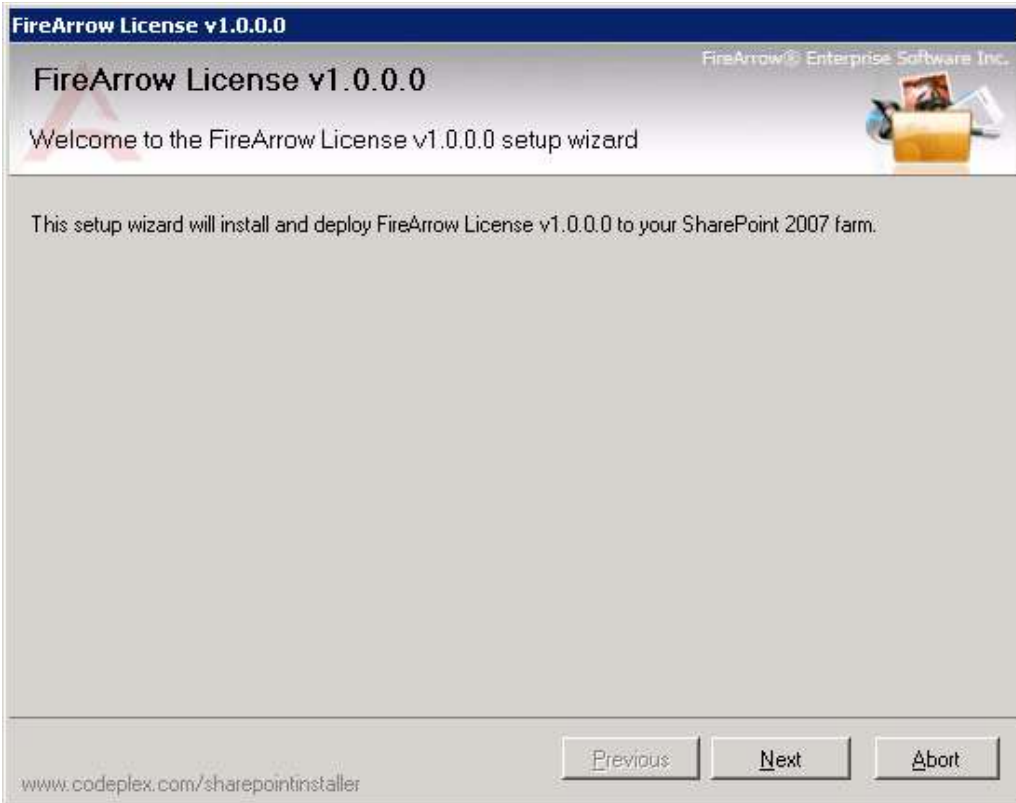
License Manager Installation Steps:

The steps to install the License Manager are as followed. You must be the SharePoint Farm Administrator for a successful installation.

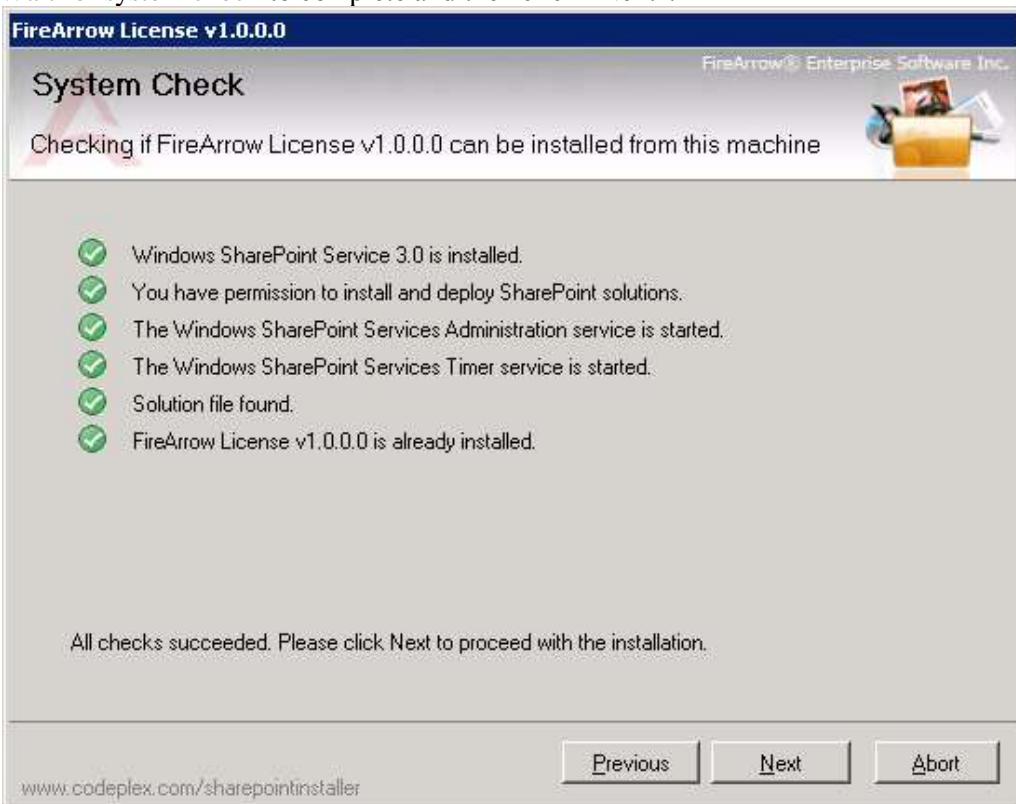
1. Open the folder for License Manager Installation and run “Setup.exe”.

Name	Date modified	Type	Size
banner	4/18/2010 5:08 PM	JPEG image	17 KB
EULA	7/13/2009 9:36 AM	Rich Text Format	10 KB
FireArrow.SharePoint.License	8/25/2010 2:41 PM	WSP File	33 KB
Setup	4/1/2010 3:18 AM	Application	387 KB
Setup.exe	8/15/2010 11:54 PM	CONFIG File	1 KB

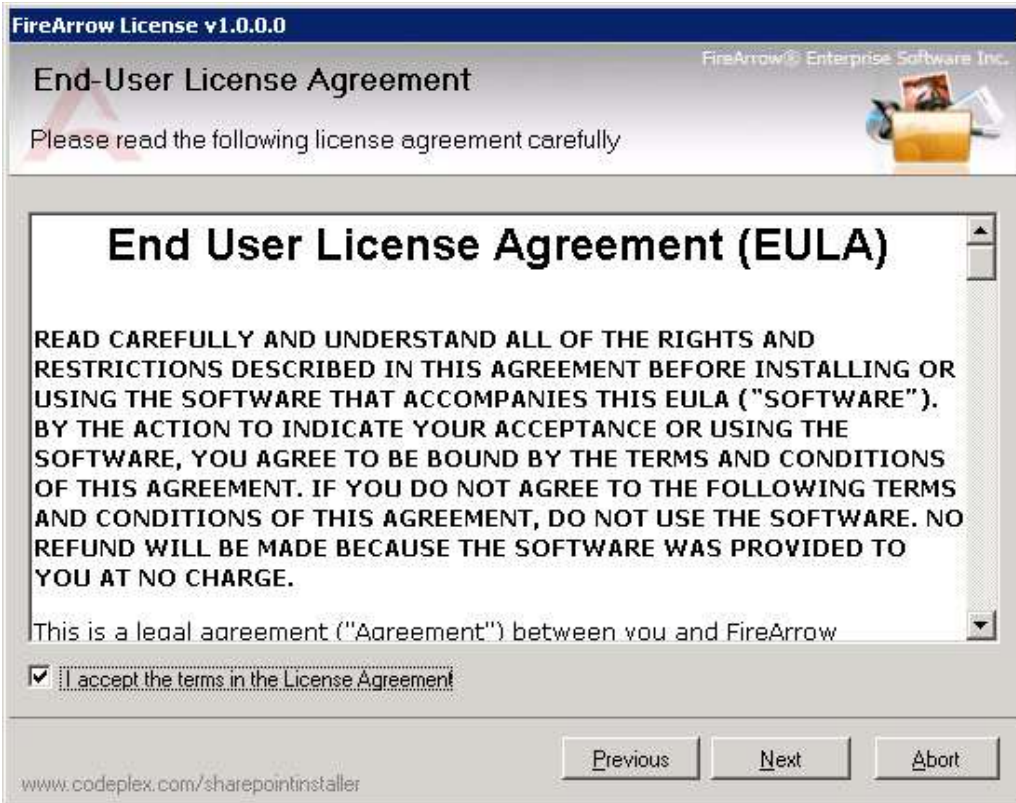
2. The setup wizard will be displayed. Click “Next” to proceed.



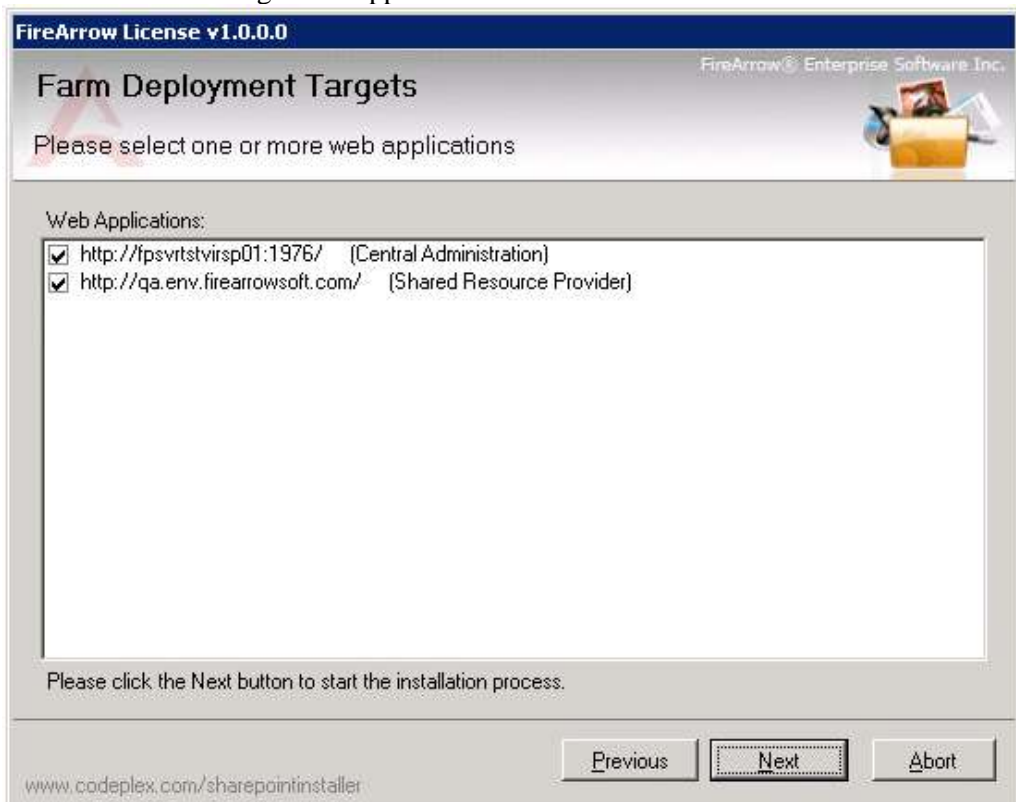
3. Wait for system check to complete and then click “Next”.



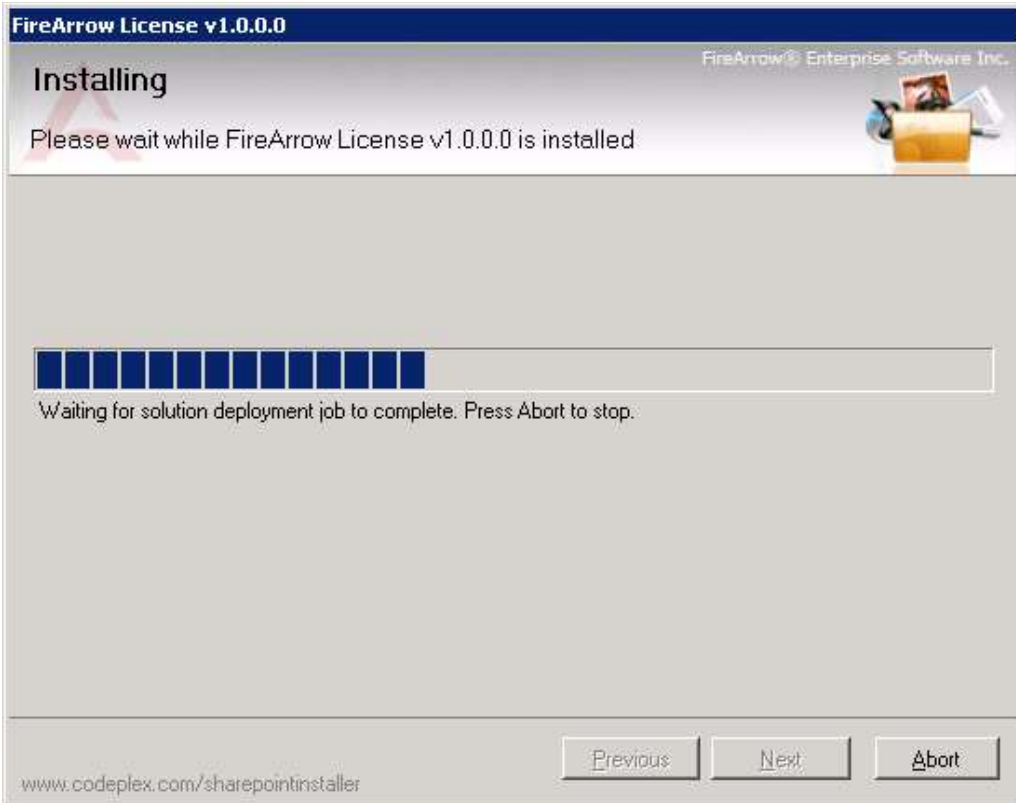
4. After you have read and accepted the License Agreement, click “Next” to continue.



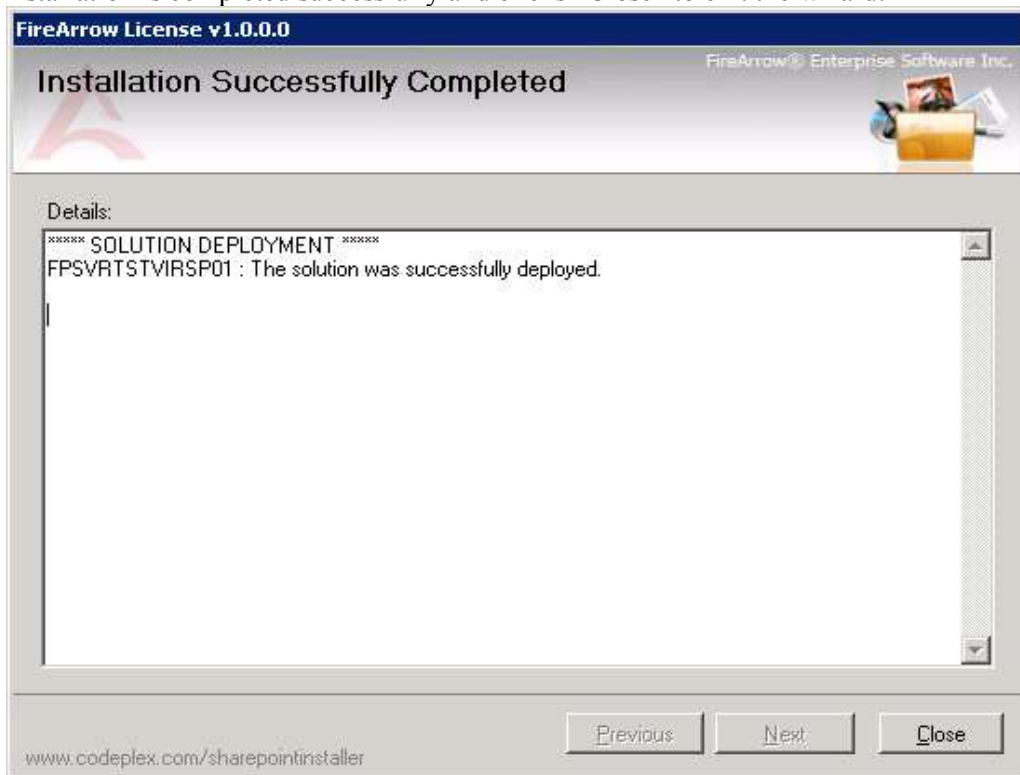
5. Select one or more target web applications and then click "Next".



6. The wizard starts installing and display the installation progress.







7. Installation is completed successfully and clicks “Close” to exit the wizard.



2 Product Activation Tool Installation

The Product Activation Tool will be used to active FireArrow products. Just like the License Manager, it is also only required to install once on a server.

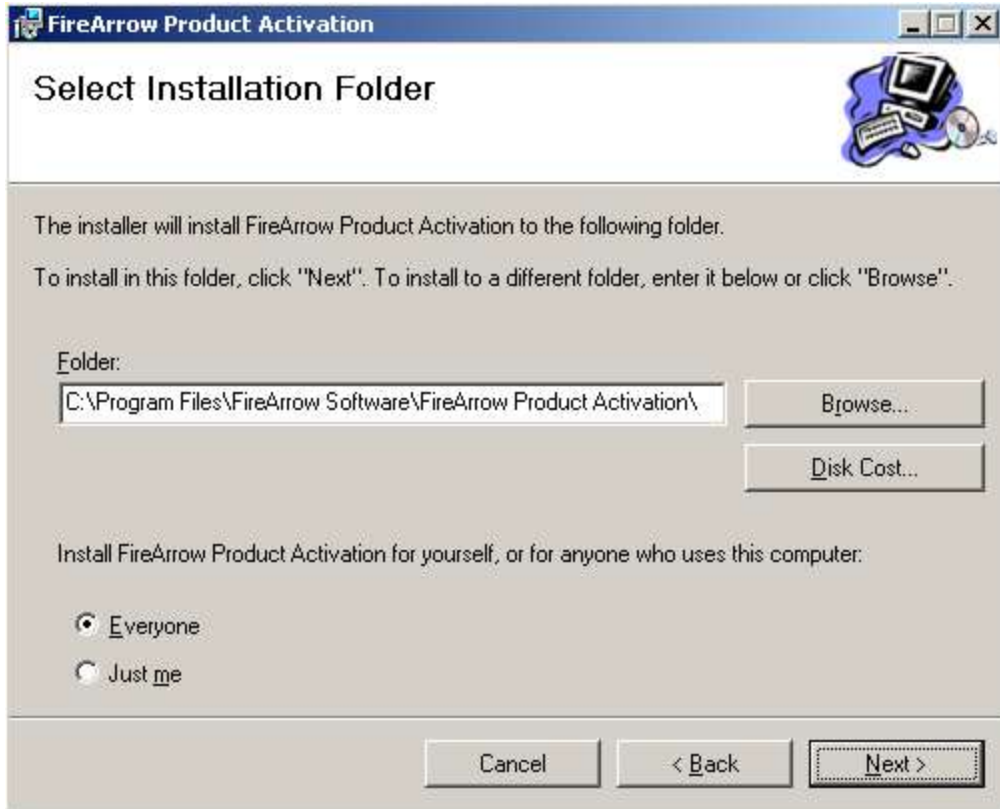
- Open the folder for Product Activation installation and run “Setup.exe”.

Name	Date modified	Type	Size
 FireArrow.ProductActionvation.Installer	8/25/2010 4:05 PM	Windows Installer ...	537 KB
 FireArrow.ProductActivation	8/25/2010 4:05 PM	Application	184 KB
 FireArrow.ProductActivation.RunAs	8/25/2010 4:05 PM	Application	76 KB
 setup	8/25/2010 4:05 PM	Application	421 KB

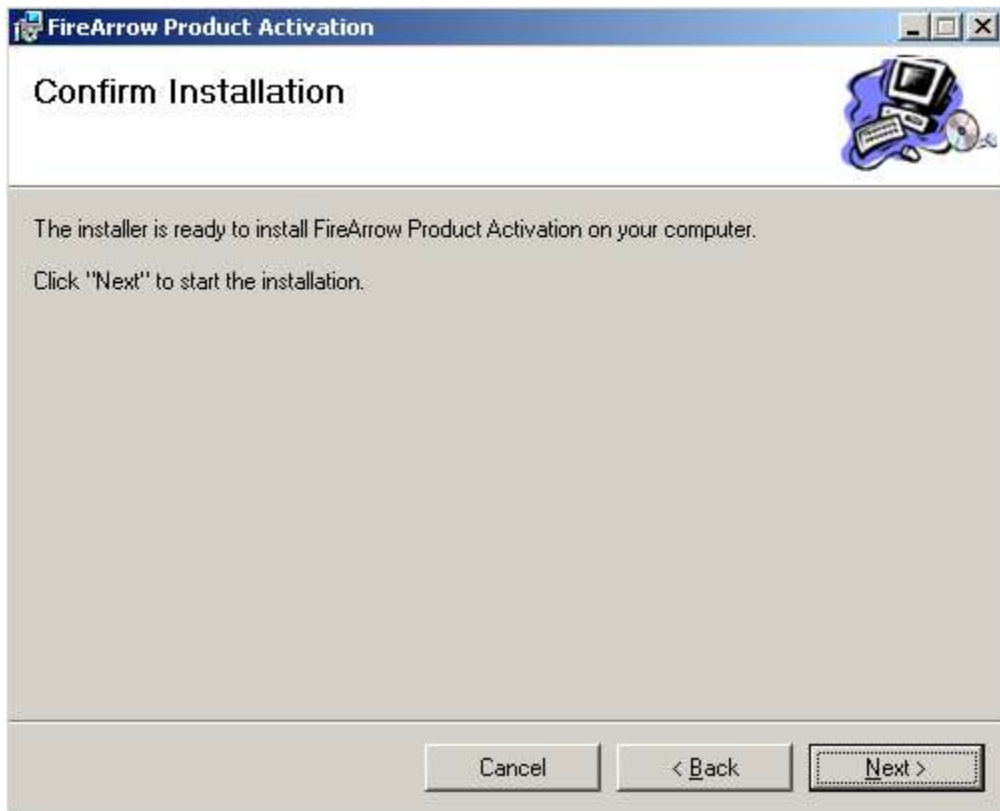
- The setup wizard will be displayed and click “Next” to proceed.



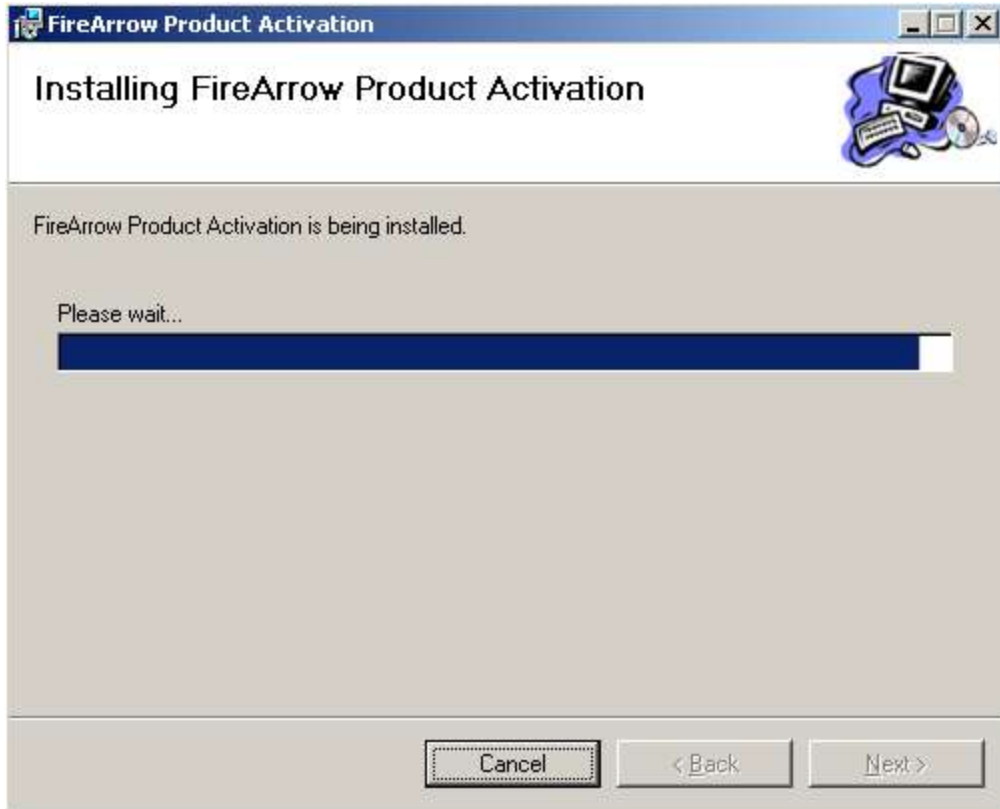
- Select the installation folder, and click ‘Next’.



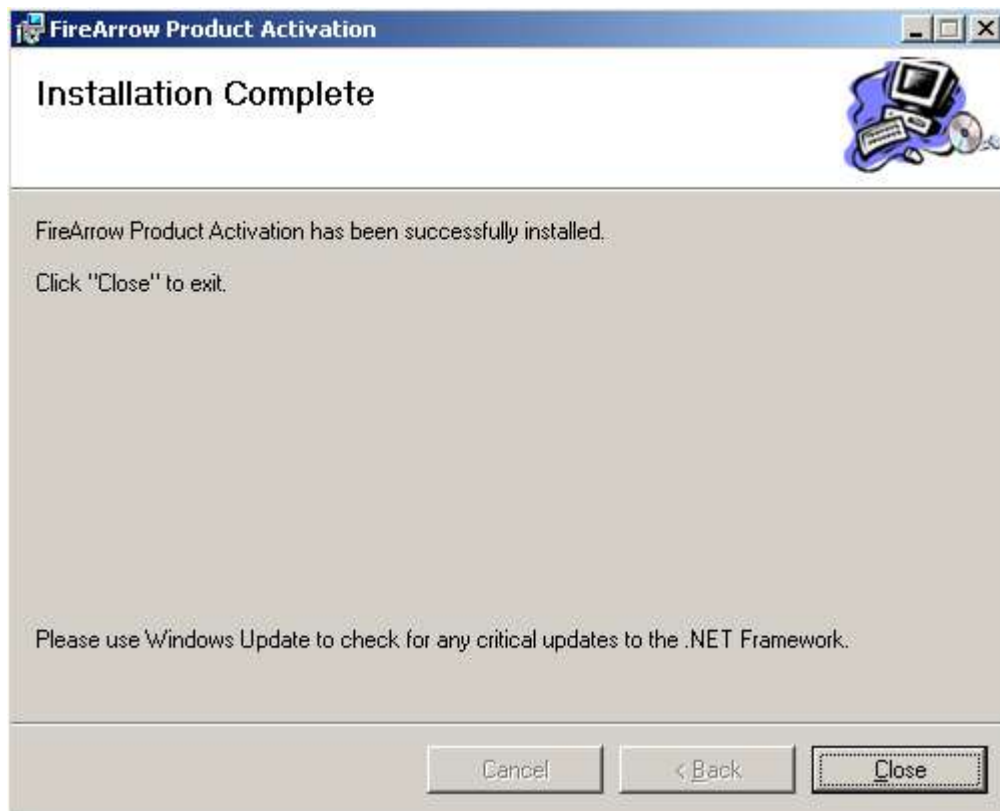
- Click 'Next' to confirm the installation.



- The wizard starts the installation and display the installation progress.



- Installation is completed successfully and clicks "Close" to exit the wizard.








3 KPI Odometer Web Part Installation

We provide two installation approaches for KPI Odometer web part installation. One is to use the installation wizard for automatic installation. The other way is to use STSADM command tool for manual installation. This section describes both approaches in detail.

Automatic Installation Approach

The KPI Odometer installation package contains the installer file, solution package file, image, and etc. You must be the SharePoint Farm Administrator for a successful installation. Please follow the following steps for installation.

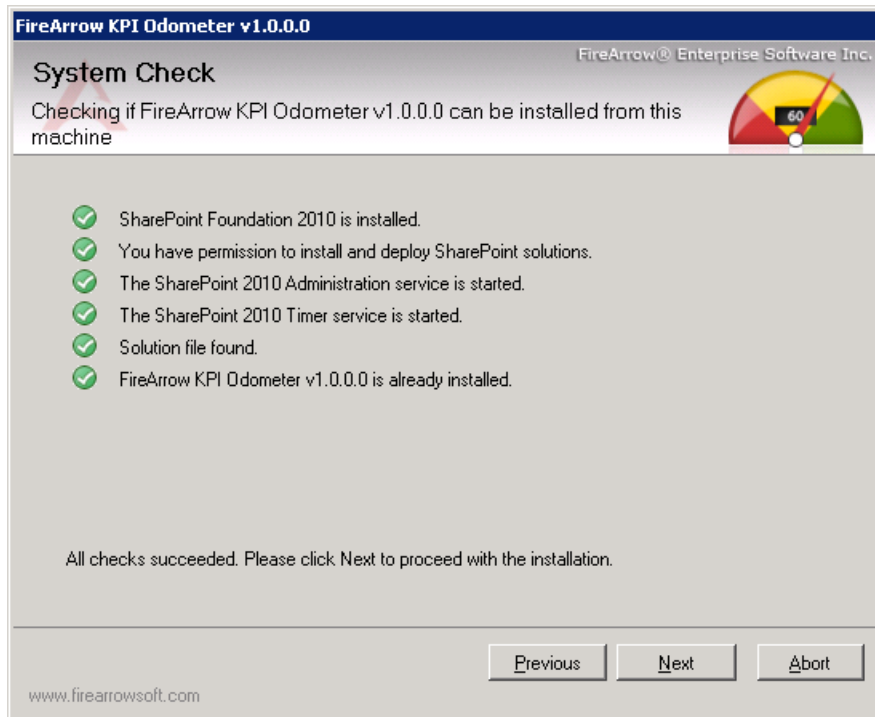
1. Open the folder for KPI Odometer installation and double click the “Setup.exe” to start the installation.

Name	Type	Size
 banner.jpg	JPEG image	16 KB
 EULA.rtf	Rich Text Format	10 KB
 FireArrow.SharePoint.KPIOdometer.wsp	WSP File	118 KB
 Setup.exe	Application	429 KB
 Setup.exe.config	CONFIG File	2 KB

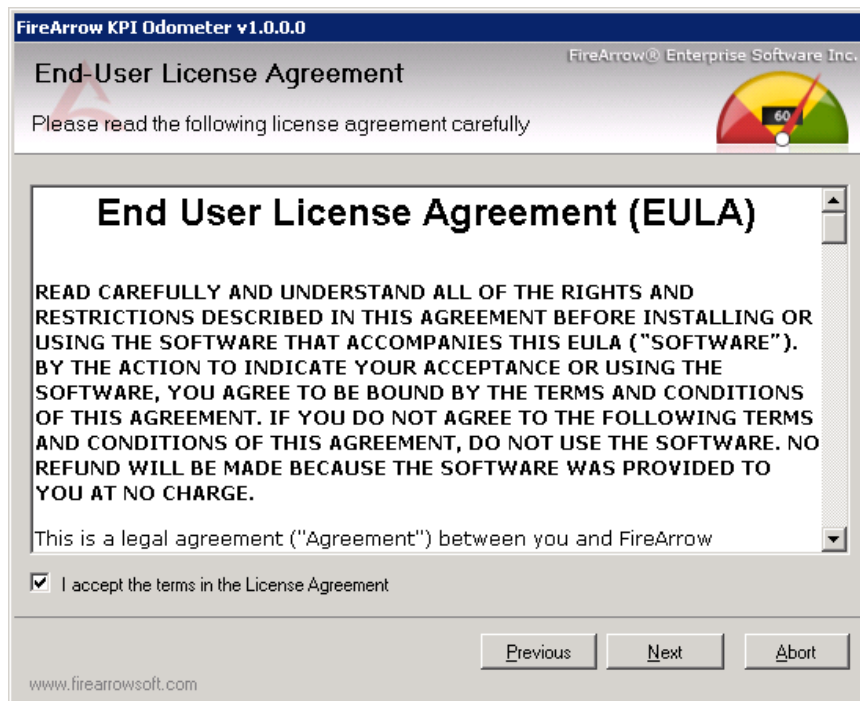
2. The setup wizard will be displayed. Click “Next” to proceed.



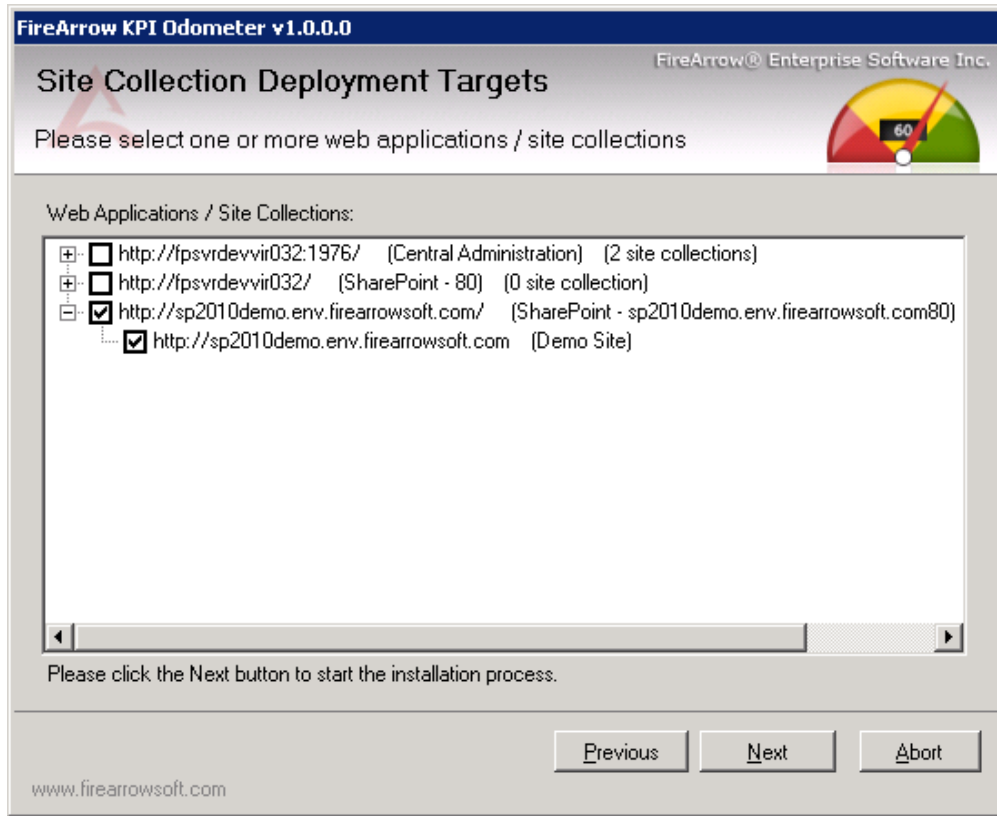
3. Wait for system check to complete and then click "Next".



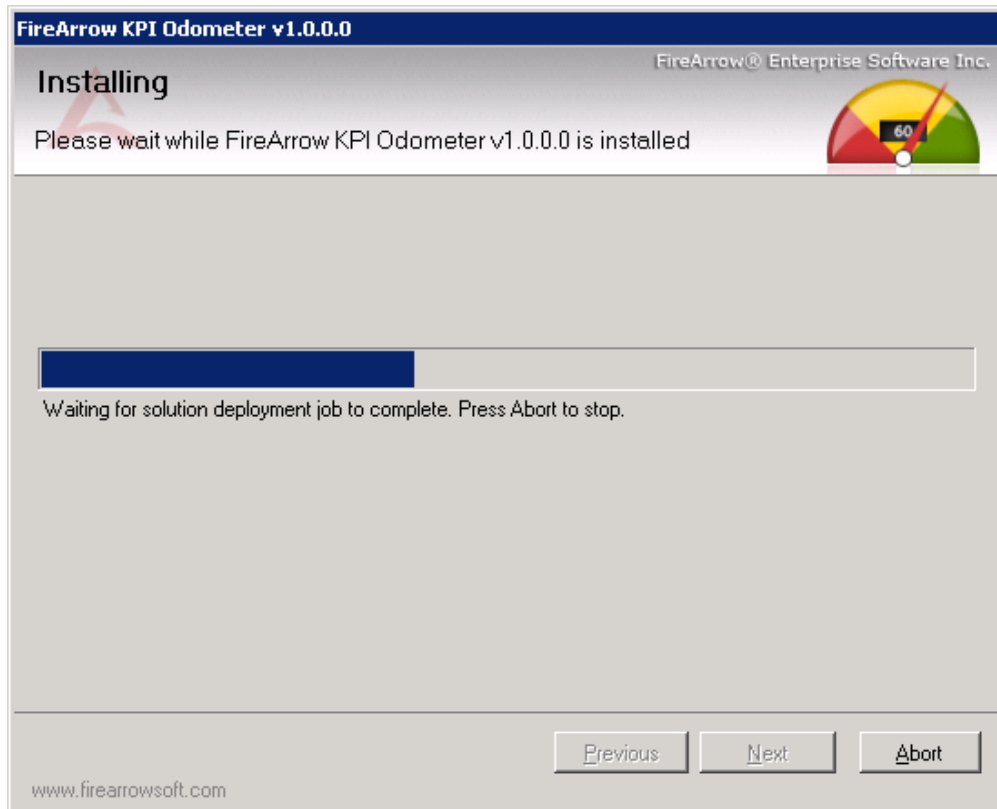
4. After you have read and accepted the License Agreement, click "Next" to continue.



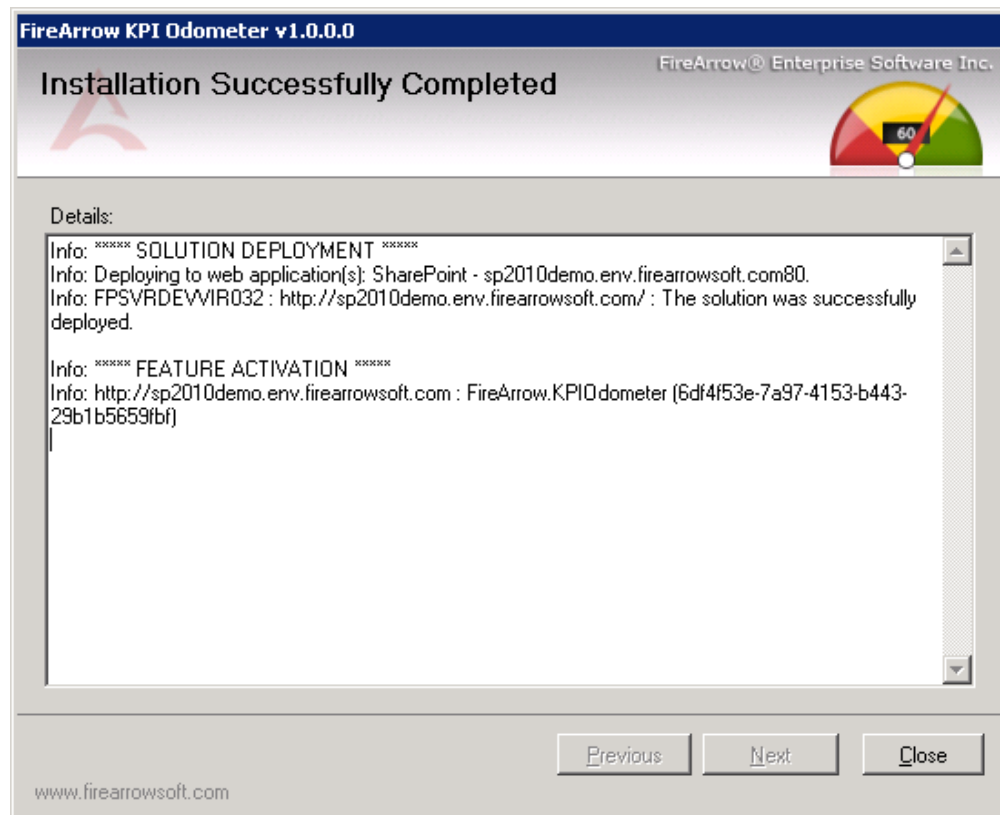
5. Select one or more target web applications and then click "Next".



6. The wizard starts installing and display the installation progress.



7. Installation is completed successfully and clicks “Close” to exit the wizard.



Manual Installation Approach

The folder for KPI Odometer installation contains the solution package which you need for manual installation.

Name	Type	Size
banner.jpg	JPEG image	16 KB
EULA.rtf	Rich Text Format	10 KB
FireArrow.SharePoint.KPIOdometer.wsp	WSP File	118 KB
Setup.exe	Application	429 KB
Setup.exe.config	CONFIG File	2 KB

The steps for manual installation are as followed:

1. Copy the solution package to the server farm and run following commands to add solutions to the server farm:
`stsadm.exe -o addsolution -filename "FireArrow.SharePoint.KPIOdometer.wsp"`
`stsadm -o execadmsvcjobs`
2. Then you need to deploy the solution package. You can deploy the solution package either by running STSADM commands or using the SharePoint 3.0 Central Administration web interface.

8. Option 1: running STSADM commands

You need to run the following two commands for solution deployment:

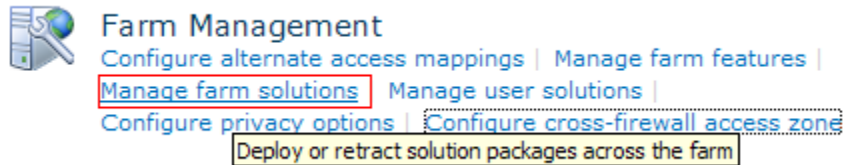
- 1) stsadm -o deploysolution -name "FireArrow.SharePoint.KPIOdrometer.wsp" -immediate -url http://qa.test.FireArrowsoft.com -force -allowCasPolicies

Note: replace the url (http://qa.test.firearrowsoft.com) with your target web application's url.

- 2) stsadm -o execadmsvcjobs

9. Option 2: using SharePoint 3.0 Central Administration Interface

- 1) Log into the SharePoint Central Administration. Go to the "System Settings" and select "Manage farm Solutions" under the "Farm Management" section.



- 2) Select the solution "FireArrow.SharePoint.KPIOdrometer.wsp", and then select Deploy Solution from the Solution Properties.

Microsoft SharePoint 2010 Central Administration > Solution Management
This page has a list of the Solutions in the farm.

Name	Status	Deployed To
firearrow.sharepoint.advancedrssviewer.wsp	Deployed	http://sp2010demo.env.firearrowsoft.com/
firearrow.sharepoint.advancedstockquote.wsp	Deployed	http://sp2010demo.env.firearrowsoft.com/
firearrow.sharepoint.advancedweatherandclock.wsp	Deployed	http://sp2010demo.env.firearrowsoft.com/
firearrow.sharepoint.crosssitelookup.2010.wsp	Deployed	http://sp2010demo.env.firearrowsoft.com/
firearrow.sharepoint.customchoice2010.wsp	Deployed	http://sp2010demo.env.firearrowsoft.com/
firearrow.sharepoint.kpiodometer.wsp	Deployed	http://sp2010demo.env.firearrowsoft.com/
firearrow.sharepoint.license.wsp	Deployed	Globally deployed.
firearrow.sharepoint.listintegrator.wsp	Deployed	http://sp2010demo.env.firearrowsoft.com/
firearrow.sharepoint.listsearch.wsp	Deployed	http://sp2010demo.env.firearrowsoft.com/
firearrow.sharepoint.livebanner.wsp	Deployed	http://sp2010demo.env.firearrowsoft.com/
firearrow.sharepoint.news.2010.wsp	Deployed	http://sp2010demo.env.firearrowsoft.com/
firearrow.sharepoint.newsrotator.wsp	Deployed	http://sp2010demo.env.firearrowsoft.com/
firearrow.sharepoint.photoviewer.wsp	Deployed	http://sp2010demo.env.firearrowsoft.com/
firearrow.sharepoint.progressbar2010.wsp	Deployed	http://sp2010demo.env.firearrowsoft.com/
firearrow.sharepoint.ratingandreview.2010.wsp	Deployed	http://sp2010demo.env.firearrowsoft.com/

Central Administration

- Application Management
- System Settings
- Monitoring
- Backup and Restore
- Security
- Upgrade and Migration
- General Application Settings
- Configuration Wizards

Deploy Solution | Retract Solution | Back to Solutions

Name:	firearrow.sharepoint.kpiodometer.wsp
Type:	Core Solution
Contains Web Application Resource:	Yes
Contains Global Assembly:	Yes
Contains Code Access Security Policy:	Yes
Deployment Server Type:	Front-end Web server
Deployment Status:	Deployed
Deployed To:	http://sp2010demo.env.firearrowsoft.com/
Last Operation Result:	The solution was successfully deployed.
Last Operation Details:	FPSVRDEVVIR032 : http://sp2010demo.env.firearrowsoft.com/ : The solution was successfully deployed.
Last Operation Time:	8/7/2012 1:49 PM

- Set the deployment job schedule and choose the target web application where the solution will be deployed.

Central Administration

- Application Management
- System Settings
- Monitoring
- Backup and Restore
- Security
- Upgrade and Migration
- General Application Settings
- Configuration Wizards

Solution Information
Information on the solution you have chosen to deploy.

Name:	firearrow.sharepoint.kpiodometer.wsp
Locale:	0
Deployed To:	None
Deployment Status:	

Deploy When?
A timer job is created to deploy this solution. Please specify the time at which you want this solution to be deployed.

Choose when to deploy the solution:

Now

At a specified time:

8/7/2012 3 PM 00

Deploy To?
The solution contains Web application scoped resources and should be deployed to specific Web applications. Please choose the Web application where you want the solution to be deployed.

Choose a Web application to deploy this solution:

http://sp2010demo.env.firearrowsoft.com/

Warning: Deploying this solution will place assemblies in the global assembly cache. This will grant the solution assemblies full trust. Do not proceed unless you trust the solution provider.

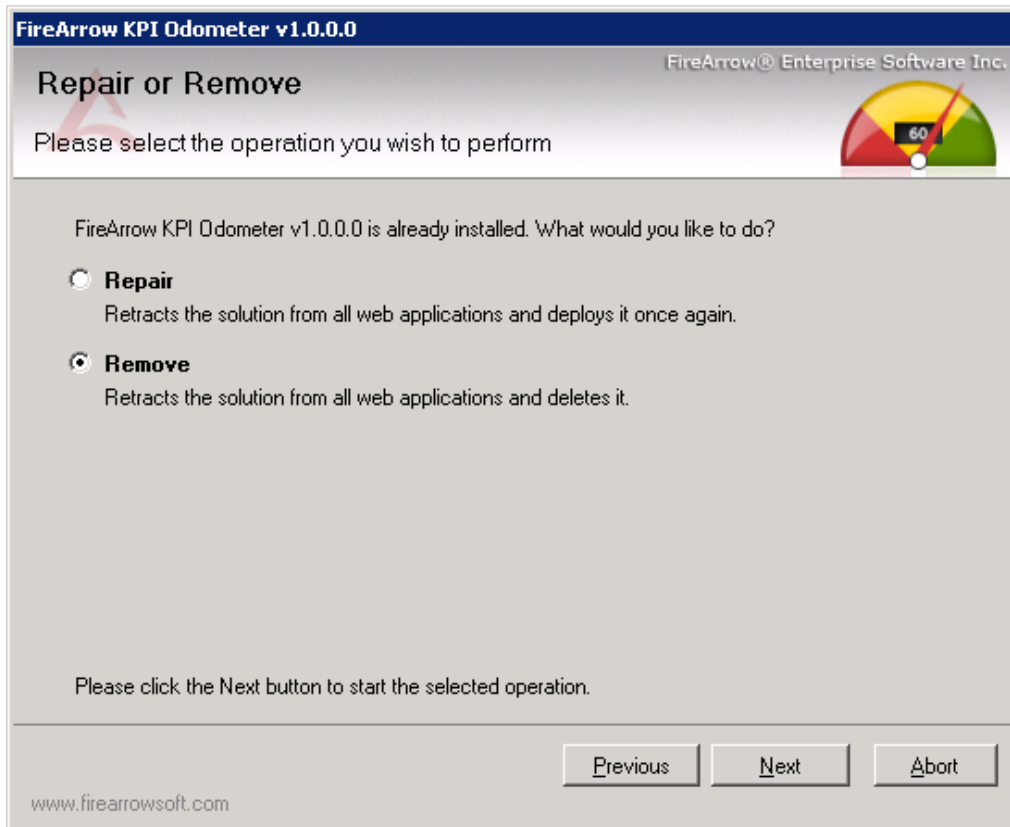
Warning: This solution contains a Code Access Security policy. Deploying this solution will change the effective trust policy. Do not proceed unless you trust the solution provider.

After the solution is deployed to target web application, run the command `"iisreset /noforce"` to restart IIS.

Un-installation

You can use FireArrow KPI Odometer Web Part Installer to uninstall KPI Odometer Web Part. To uninstall the web part:

- a. Run the setup.exe on your system.
- b. Select the radio button for “Remove” and click “Next”, the web part will be uninstalled.



License Management

The FireArrow KPI Odometer is allowed to use for 30-days after the installation without license activation. It is always recommended to provision your valid license activation key immediately after the installation is completed. Please go to the FireArrow web site (<http://www.firearrowsoft.com>) to purchase the software in order to obtain the license activation key.

After the software purchase, please email us (support@firearrowsoft.com) the following information in order to generate the product activation code:

1. Product key
2. Order confirmation #

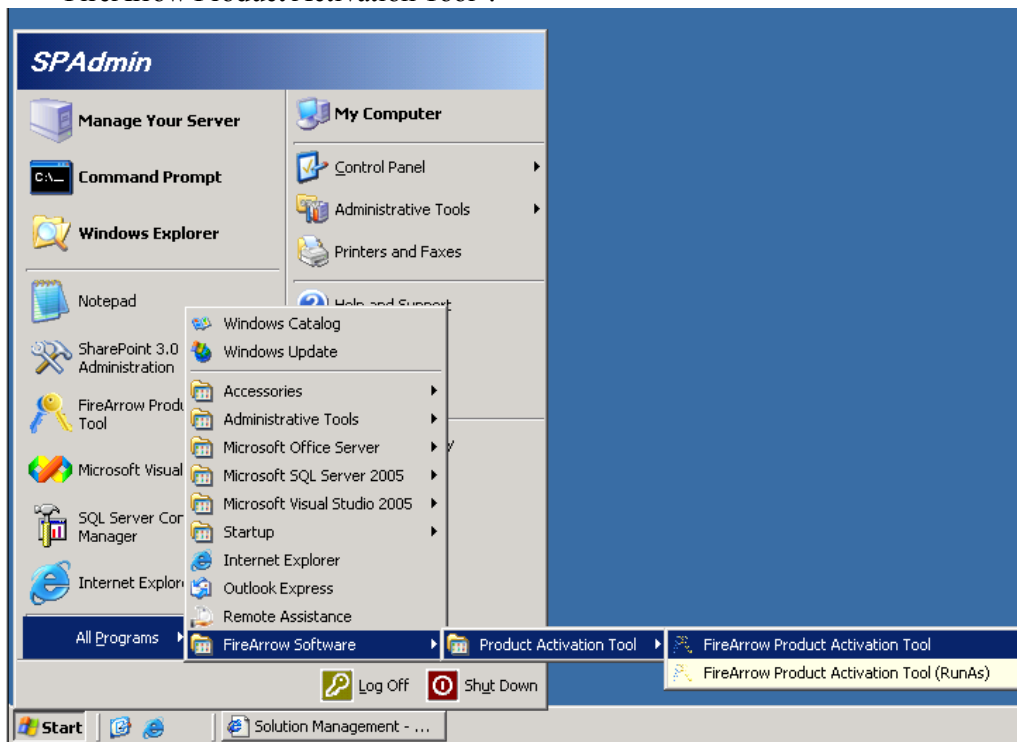
We will email you the product activation key.

You can obtain the product key information through the Product Activation Tool. Please follow steps in the below section to obtain the product key and complete the license activation.

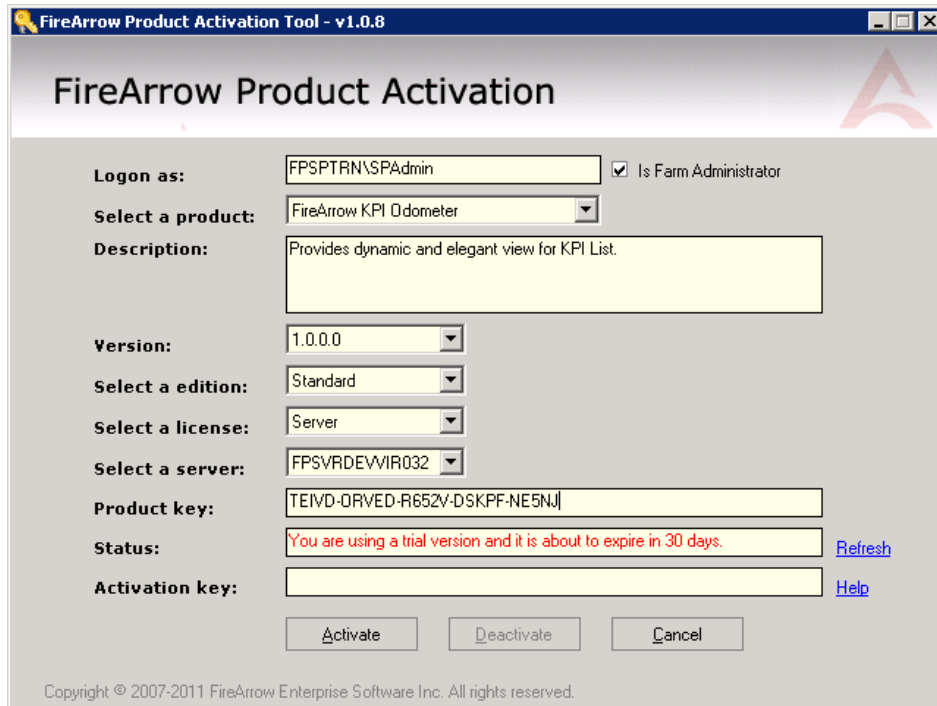
License Activation

After the Product Activation Manager is successfully installed, follow below steps to obtain the product key information and activate the FireArrow product license in your server.

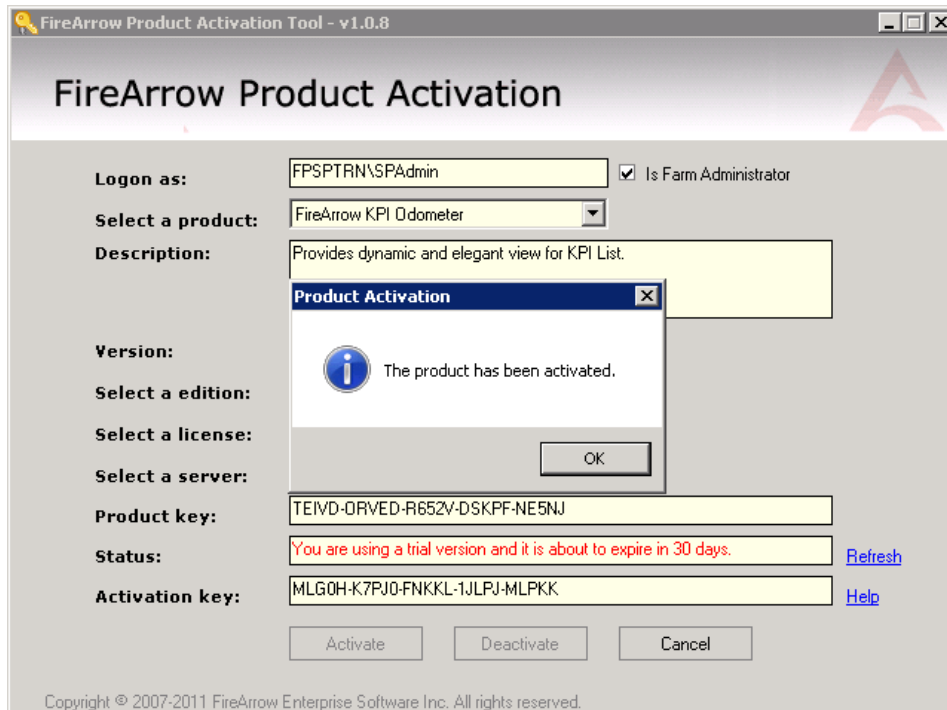
- Go to “Start” menu→All Programs→FireArrow Software→Product Activation Tool and click “FireArrow Product Activation Tool”.



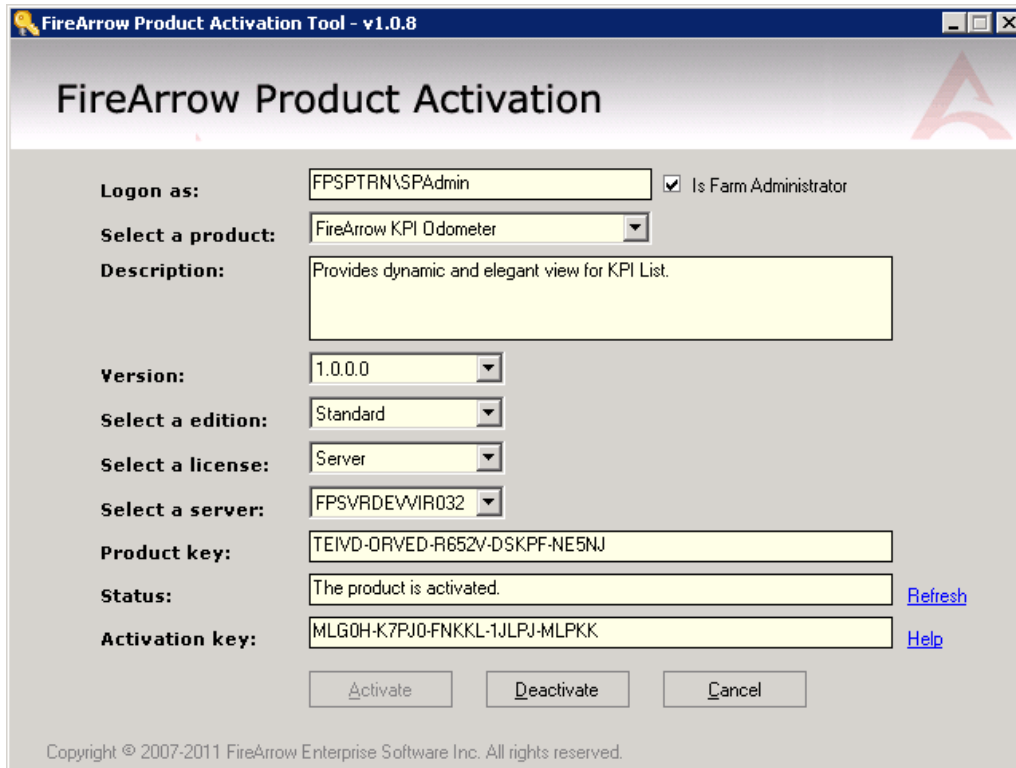
- Select the ‘FireArrow KPI Odometer’ from the product dropdown list and the corresponding product information will be displayed in the form, including the “Product Key” information. You can also see the license status from the “Status” field. Before activation, the status will indicate you are using a trial version.



- Once you get the Activation Key, enter it into the ‘Activation Key’ field, and click ‘Activate’ button.



- Click OK in the pop-up window to confirm the activation. And you will notice that the message in the Status field is changed to “The product is activated”. The product activation is completed.



FireArrow Product Activation

Logon as: FSPSTRN\SPAdmin Is Farm Administrator

Select a product: FireArrow KPI Odometer

Description: Provides dynamic and elegant view for KPI List.

Version: 1.0.0.0

Select a edition: Standard

Select a license: Server

Select a server: FPSVRDEWIR032

Product key: TEIVD-ORVED-R652V-DSKPF-NE5NJ

Status: The product is activated. [Refresh](#)

Activation key: MLG0H-K7PJ0-FNKKL-1JLPJ-MLPKK [Help](#)

Copyright © 2007-2011 FireArrow Enterprise Software Inc. All rights reserved.

Technical Support

Please feel free to contact our technical support team if you have any question or encounter any technical difficulty.

Technical Support: support@firearrowsoft.com

Please visit our web site (<http://www.firearrowsoft.com>) for any product update and answers to frequently asked questions.