



Weather and Clock Web Part Installation Guide

Version 1.0.0



Notice

This document is a proprietary product of FireArrow and is protected by copyright laws and international treaty. Information in this manual is subject to change without notice and does not represent a commitment on the part of FireArrow. While reasonable efforts have been made to ensure the accuracy of the information contained herein, FireArrow assumes no liability for errors or omissions. No liability is assumed for direct, incidental, or consequential damages resulting from the use of the information contained in this document.

The copyrighted software that accompanies this document is licensed to the End User for use only in strict accordance with the End User License Agreement, which the Licensee should read carefully before commencing use of the software. No part of this publication may be reproduced, transmitted, stored in a retrieval system, nor translated into any human or computer language, in any form or by any means, electronic, mechanical, magnetic, optical, chemical, manual or otherwise, without the prior written permission of the copyright owner. This document may use fictitious names for purposes of demonstration; references to be actual persons, companies, or organizations are strictly coincidental.

Table of Contents

Table of Contents	2
Installation Prerequisites	3
Weather and Clock Installation	3
Un-installation	9
Technical Support	11

Installation Prerequisites

System Requirements:

Microsoft Windows SharePoint Service 3.0, Microsoft Office SharePoint Server 2007, SharePoint Foundation 2010 or SharePoint Server 2010.

Supported Browser:

- Internet Explorer 6, 7, 8
- FireFox 3.0+
- Safari 3.0+
- Chrome

Language Support:

- English






Weather and Clock Installation

There are two installation approaches. One is to use the installation wizard for automatic installation. The other way is to use STSADM command tool for manual installation. This section describes both approaches in detail.

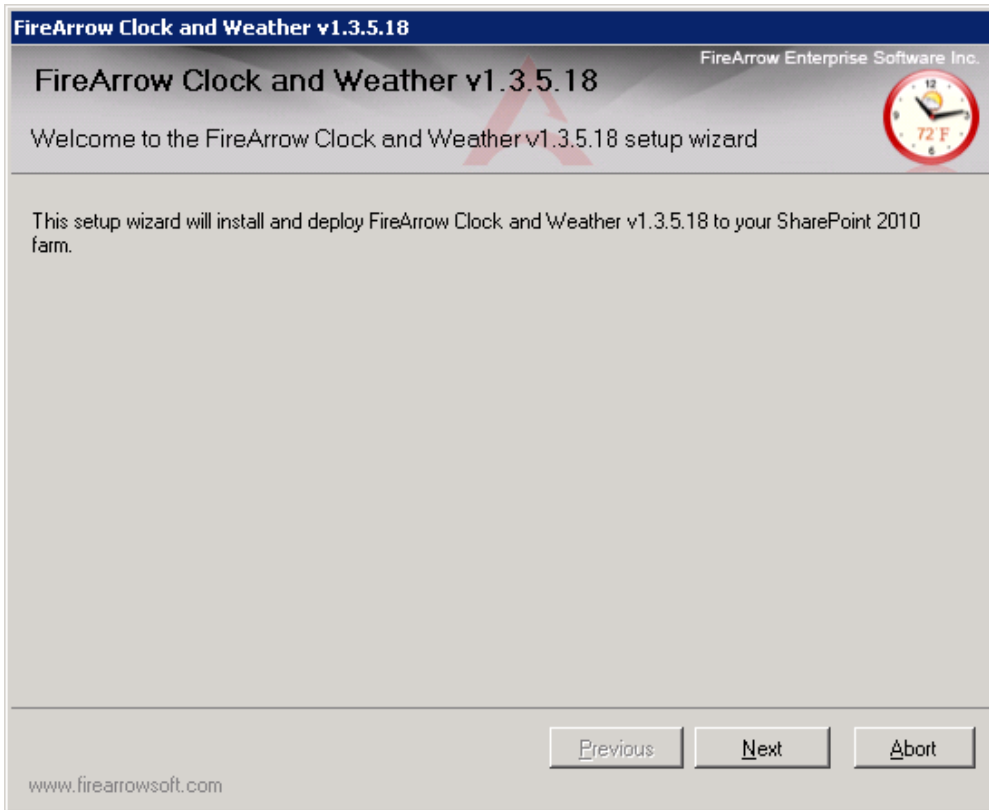
Automatic Installation Approach

The software installation package contains the installer file, solution package file, image, and etc. You must be the *SharePoint Farm Administrator* for the successful installation. The steps are as follows.

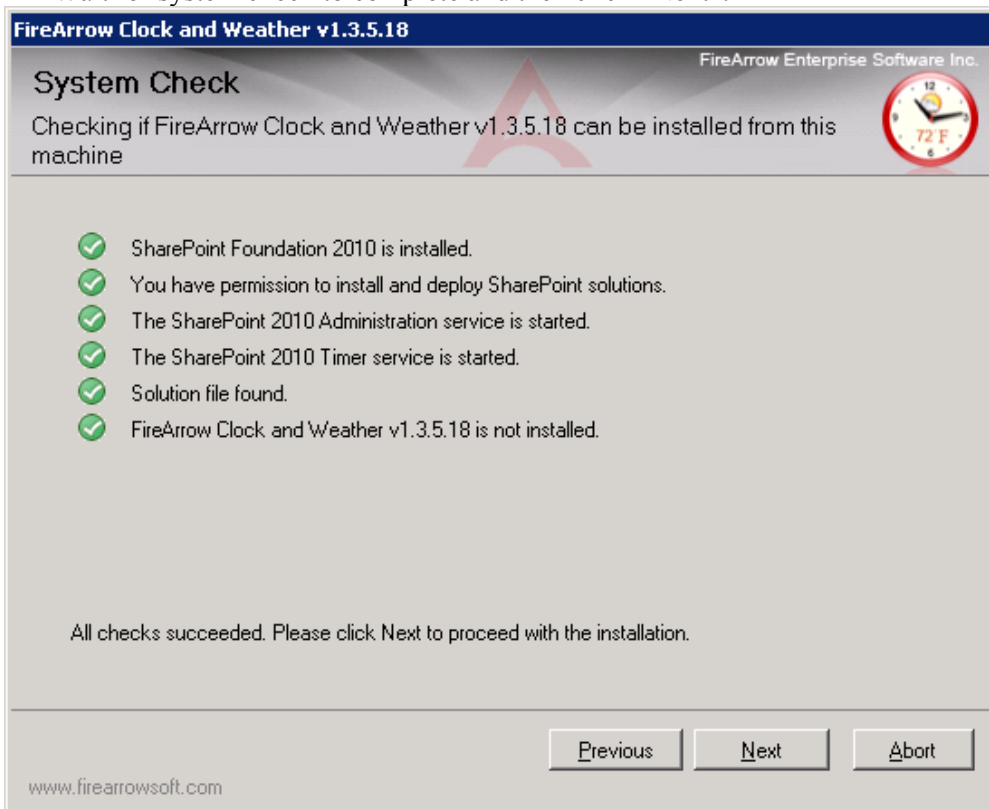
- Open the folder for Weather and Clock installation and double-click the “Setup.exe” to start the installation.

Name	Type
 banner	JPEG image
 EULA	Rich Text Format
 FireArrow.SharePoint.WeatherAndClock	WSP File
 Setup	Application
 Setup.exe	CONFIG File

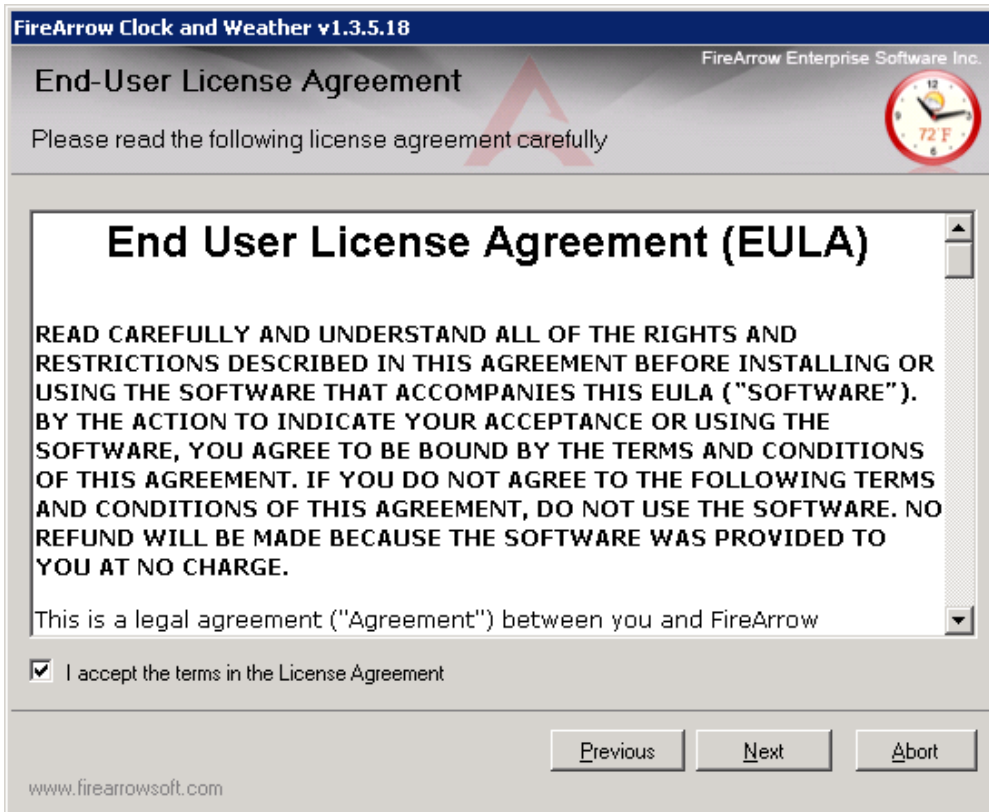
- The setup wizard will be displayed. Click “Next” to proceed.



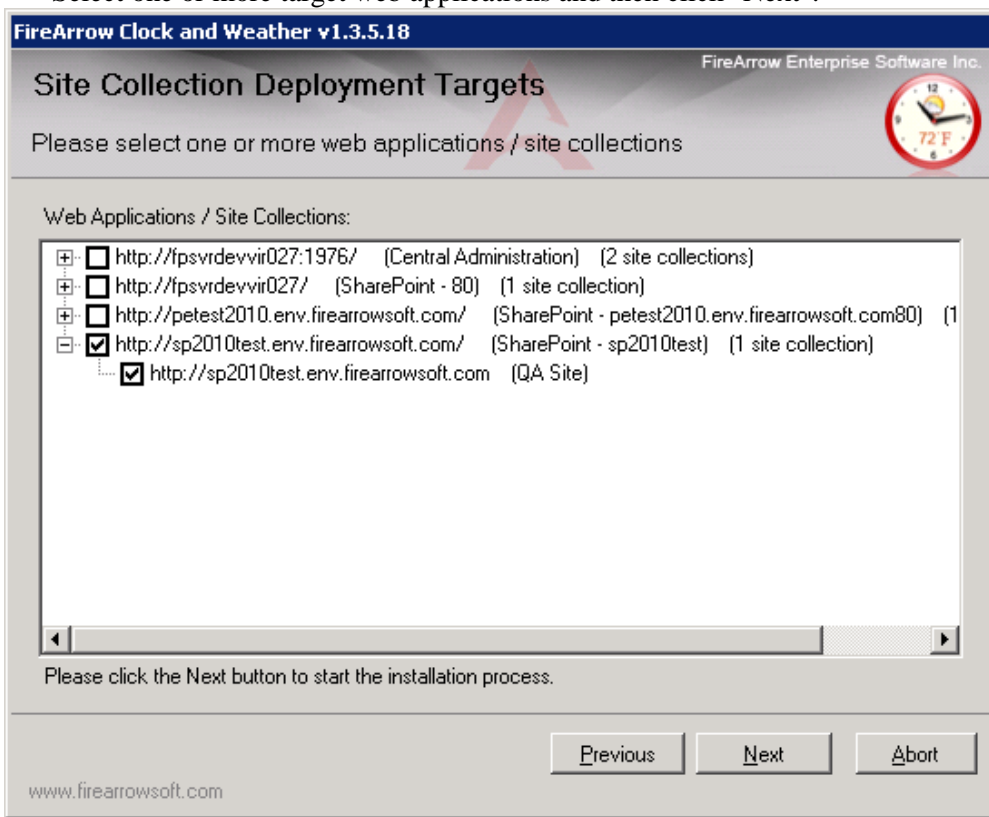
- Wait for system check to complete and then click “Next”.



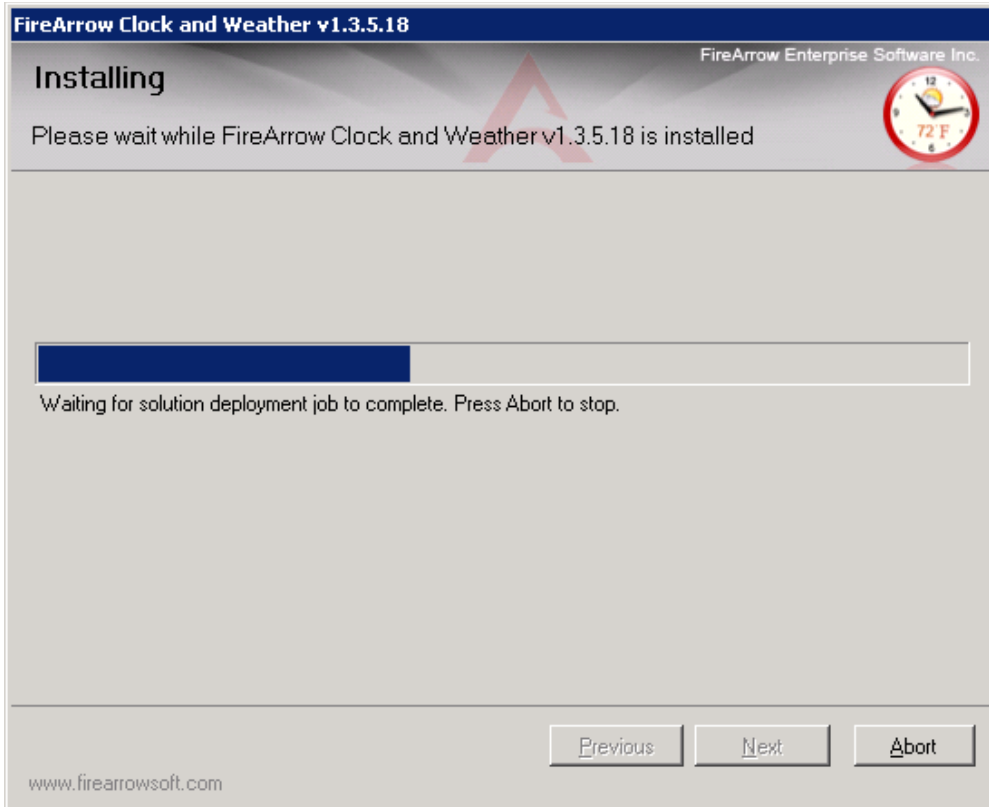
- After you have read and accepted the License Agreement, click “Next” to continue.



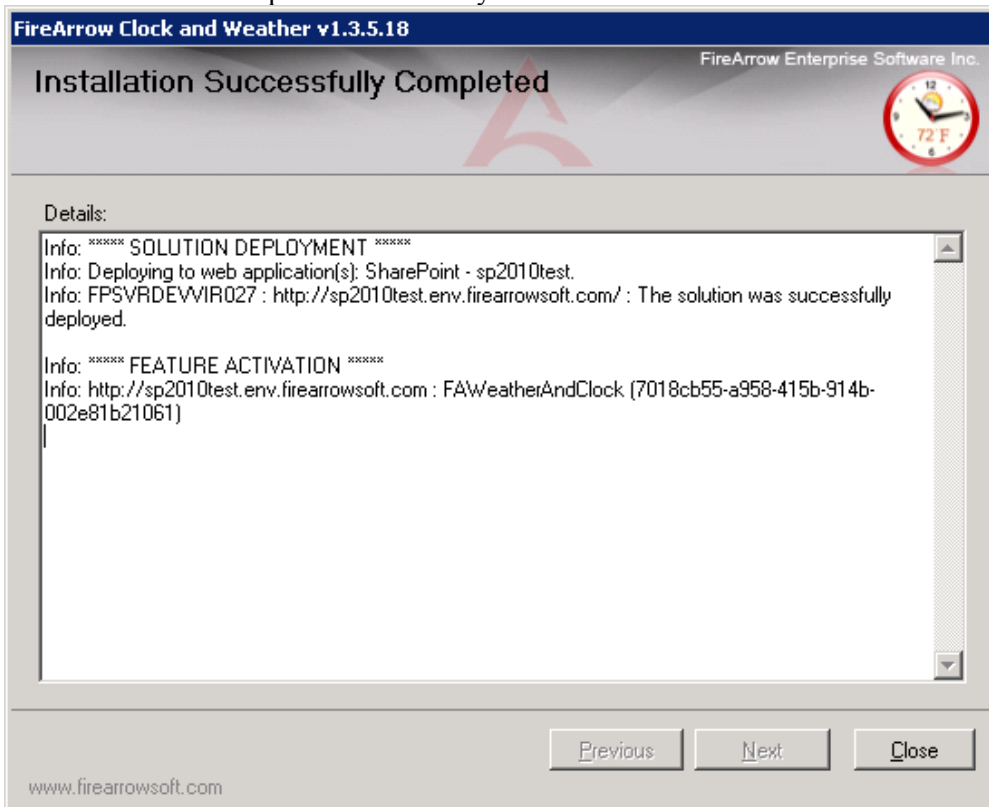
- Select one or more target web applications and then click "Next".



- The wizard starts installing the solution and display the installation progress.








- Installation is completed successfully and clicks “Close” to exit the wizard.



- After installation, run the command “`iisreset /noforce`” to restart IIS.

Manual Installation Approach

The folder for Weather and Clock installation contains the solution package which you need for manual installation.

Name	Type
 banner	JPEG image
 EULA	Rich Text Format
 FireArrow.SharePoint.WeatherAndClock	WSP File
 Setup	Application
 Setup.exe	CONFIG File

The steps for manual installation are as follows:

1. Copy the solution package to the server farm and run following commands to add the solution to the server farm:
stsadm.exe -o addsolution -filename "FireArrow.SharePoint.WeatherAndClock.wsp"
stsadm -o execadmsvcjobs
2. Then you need to deploy the solution package. You can deploy the solution package either by running STSADM commands or using the SharePoint 3.0 Central Administration web interface.

- **Option 1: STSADM commands**

You need to run the following two commands for solution deployment:

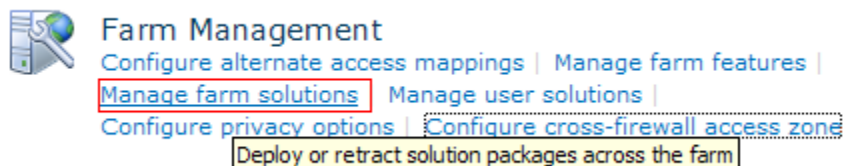
- 1) stsadm -o deploySolution -name "FireArrow.SharePoint. WeatherAndClock.wsp" -immediate -url http://qa.test.FireArrowsoft.com -force -allowCasPolicies

Note: Please replace the url (http://qa.test.firearrowsoft.com) with your target web application's url.

- 2) stsadm -o execadmsvcjobs

- **Option 2: SharePoint 3.0 Central Administration:**

- 1) Open Central Administration, select Operations, and select Solution management under the Global Configuration.



- 2) Select the solution "FireArrow.SharePoint.WeatherAndClock.wsp", and then select Deploy Solution from the Solution Properties.

Microsoft SharePoint 2010 Central Administration > Solution Management
This page has a list of the Solutions in the farm.




	Name	Status	Deployed To
Application Management	firearrow.sharepoint.advancedrssviewer.wsp	Deployed	http://sp2010test.env.firearrowsoft.com/
System Settings	firearrow.sharepoint.advancedstockquote.wsp	Deployed	http://sp2010test.env.firearrowsoft.com/
Monitoring	firearrow.sharepoint.customchoice2010.wsp	Deployed	http://sp2010test.env.firearrowsoft.com/
Backup and Restore	firearrow.sharepoint.license.wsp	Deployed	Globally deployed.
Security	firearrow.sharepoint.livebanner.wsp	Deployed	http://sp2010test.env.firearrowsoft.com/
Upgrade and Migration	firearrow.sharepoint.news.2010.wsp	Deployed	http://sp2010test.env.firearrowsoft.com/
General Application Settings	firearrow.sharepoint.newsrotator.wsp	Deployed	http://sp2010test.env.firearrowsoft.com/
Configuration Wizards	firearrow.sharepoint.photoviewer.wsp	Deployed	http://sp2010test.env.firearrowsoft.com/
	firearrow.sharepoint.progressbar2010.wsp	Deployed	http://sp2010test.env.firearrowsoft.com/
	firearrow.sharepoint.ratingandreview.2010.wsp	Deployed	http://sp2010test.env.firearrowsoft.com/
	firearrow.sharepoint.ratingandreviewwebpart.wsp	Deployed	http://sp2010test.env.firearrowsoft.com/
	firearrow.sharepoint.rssviewer.wsp	Deployed	http://sp2010test.env.firearrowsoft.com/
	firearrow.sharepoint.stockquote.wsp	Deployed	http://sp2010test.env.firearrowsoft.com/
	firearrow.sharepoint.weatherandclock.wsp	Deployed	http://sp2010test.env.firearrowsoft.com/

Microsoft SharePoint 2010 Central Administration > Solution Properties

[Deploy Solution](#) | [Retract Solution](#) | [Back to Solutions](#)

Central Administration	Name:	firearrow.sharepoint.weatherandclock.wsp
Application Management	Type:	Core Solution
System Settings	Contains Web Application Resource:	Yes
Monitoring	Contains Global Assembly:	No
Backup and Restore	Contains Code Access Security Policy:	Yes
Security	Deployment Server Type:	Front-end Web server
Upgrade and Migration	Deployment Status:	Deployed
General Application Settings	Deployed To:	http://sp2010test.env.firearrowsoft.com/
Configuration Wizards	Last Operation Result:	The solution was successfully deployed.
	Last Operation Details:	FPSVRDEVVIR027 : http://sp2010test.env.firearrowsoft.com/ : The solution was successfully deployed.
	Last Operation Time:	8/14/2011 11:29 PM

- Set the deployment job schedule and choose the target web application where the solution will be deployed.

<p>Central Administration</p> <p>Application Management</p> <p>System Settings</p> <p>Monitoring</p> <p>Backup and Restore</p> <p>Security</p> <p>Upgrade and Migration</p> <p>General Application Settings</p> <p>Configuration Wizards</p>	<p>Solution Information</p> <p>Information on the solution you have chosen to deploy.</p> <p>Name: firearrow.sharepoint.weatherandclock.wsp</p> <p>Locale: 0</p> <p>Deployed To: None</p> <p>Deployment Status:</p>
	<p>Deploy When?</p> <p>A timer job is created to deploy this solution. Please specify the time at which you want this solution to be deployed.</p> <p>Choose when to deploy the solution:</p> <p><input checked="" type="radio"/> Now</p> <p><input type="radio"/> At a specified time:</p> <p>8/15/2011  3 PM  00 </p>
	<p>Deploy To?</p> <p>The solution contains Web application scoped resources and should be deployed to specific Web applications. Please choose the Web application where you want the solution to be deployed.</p> <p>Choose a Web application to deploy this solution:</p> <p><input type="text" value="http://sp2010test.env.firearrowsoft.com/"/></p> <p>Warning: This solution contains a Code Access Security policy. Deploying this solution will change the effective trust policy. Do not proceed unless you trust the solution provider.</p>

- After the solution is deployed to target web application, run the command “*iisreset /noforce*” to restart IIS.

Un-installation

You can use the installer to uninstall the Weather and Clock Web Part. The steps to uninstall it are as follows.

- 1) Run the setup.exe.
- 2) Select the radio button for “Remove” and click “Next”, the solution will be uninstalled from the system.

Repair or Remove

Please select the operation you wish to perform



FireArrow Clock and Weather v1.3.5.18 is already installed. What would you like to do?

- Repair**
Retracts the solution from all web applications and deploys it once again.
- Remove**
Retracts the solution from all web applications and deletes it.

Please click the Next button to start the selected operation.

Previous

Next

Abort

Technical Support

Please feel free to contact our technical support team when you have any question or encounter any technical difficulty.

Technical Support: support@firearrowsoft.com

Please visit our web site (<http://www.firearrowsoft.com>) for any product update and answers to frequently asked questions.